

nortik PackRaft
Series – Quick Start
Guide



Trekking + Rafting

TrekRafting

A yellow rectangular box with rounded corners and a black border. It contains two black icons: a hiker with a backpack on the left and a person in a raft on the right. A red plus sign is positioned between the two icons. Below the icons, the words "Trekking" and "Rafting" are written in black. At the bottom, a black hand icon points to the word "TrekRafting" which is written in red.

To watch the setup video on our YouTube channel, simply scan the QR code for your PackRaft:

<p>nortik LightRaf t</p>		
<p>nortik TrekRaf t</p>	 	 
<p>nortik TrekRaft Expeditio n</p>	 	
<p>nortik CityRaf t</p>		
<p>nortik FamilyRaft</p>		
<p>nortik DUO Expedition PackRaft</p>		

Please read the instructions carefully before you begin. Then follow them step by step.

Contents



- 1) 1x carrying bag
- 2) 1x raft
- 3) 1x inflation bag
- 4) 1x seat (inflatable)
- 5) Repair kit (not shown)

Setup



Please unfold the raft and unscrew the cap of the black valve.

Then attach the plug from the inflation bag to it



The air is pumped into the boat using the inflation bag. It takes a little getting used to at first, but it works very well.

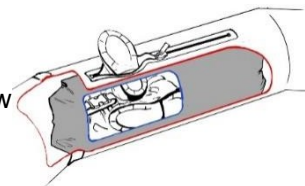
With about 7–8 pumps, the TrekRaft is filled enough that you can use your mouth to generate the remaining pressure.

TrekRaft with canopy:

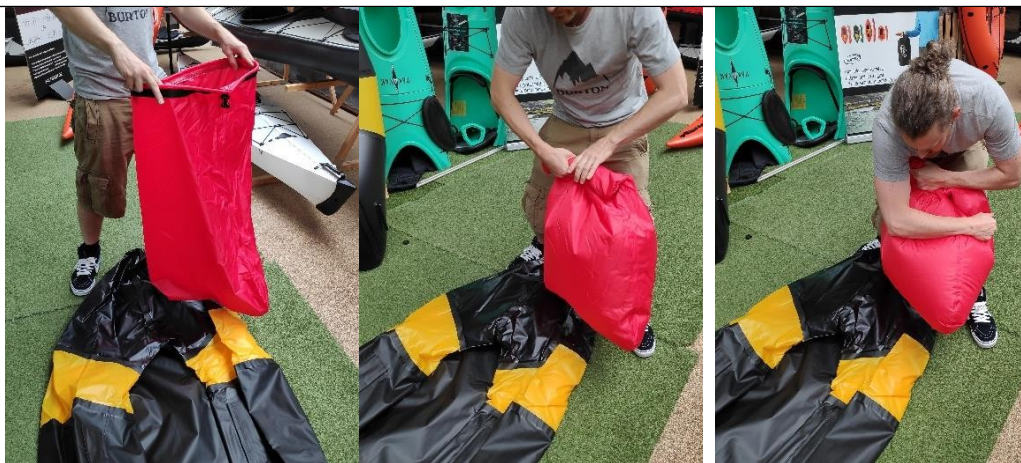
If you own a TrekRaft with a canopy, please read the instructions for **installing the coaming BEFORE INFLATING!** These can be found on **page 6**.

TrekRaft Expedition / DUO Expedition PackRaft:

The inner pack pockets must be **filled BEFORE INFLATION**. Please follow the instructions on **page 8**.



The general procedure for **inflation** is shown below:



Pull the inflation bag upward, close it slowly, and then tie it off. This “traps” the air inside the bag. Then fold, roll, or press the inflation bag downward; this forces the air into the raft.

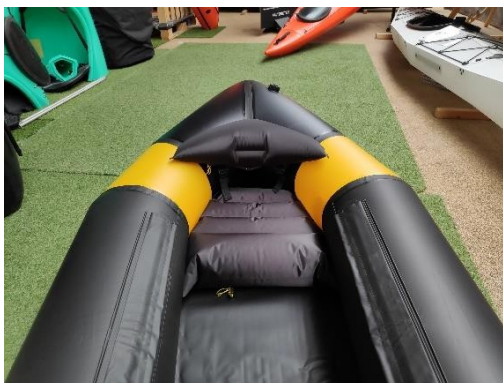
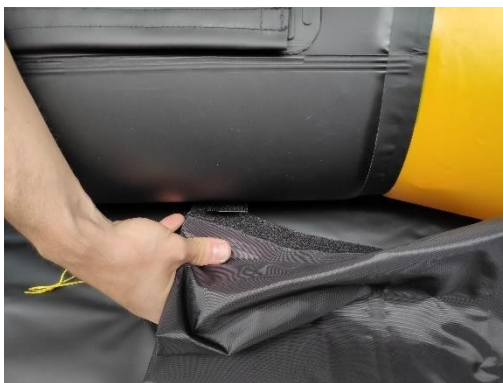
Once the raft is sufficiently inflated, remove the inflation bag from the valve and close the valve again.



To generate final pressure, blow into it a few more times with your mouth if necessary. There is an adapter for this purpose that can be screwed onto the inflation valve. The check valve prevents air from escaping.

NOTE:
It is not unusual for the air pressure to decrease after entering the (often cold) water. If necessary, increase the air pressure again by blowing into the valve.

Seat and Backrest



Now place the seat in the stern of the boat with the loops facing down.

The seat is then secured to the boat's mounting brackets using Velcro.

Inflate the seat and the backrest cushion.



The backrest's inflation tube can be secured to the back using Velcro.



The height and attachment of the backrest can be adjusted using the drawstrings.



Alternatively, you can inflate the seat outside the boat and then attach it using Velcro.

TrekRaft with canopy – Installation and handling of the coaming

The coaming is installed when the TrekRaft is **only slightly inflated**. It is **essential to follow** the procedure for assembling and disassembling the coaming, as it can otherwise quickly become damaged at the joints!

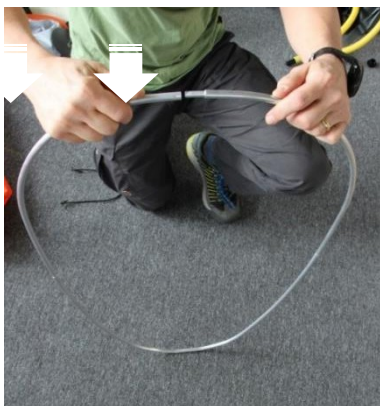
Please read the instructions carefully!



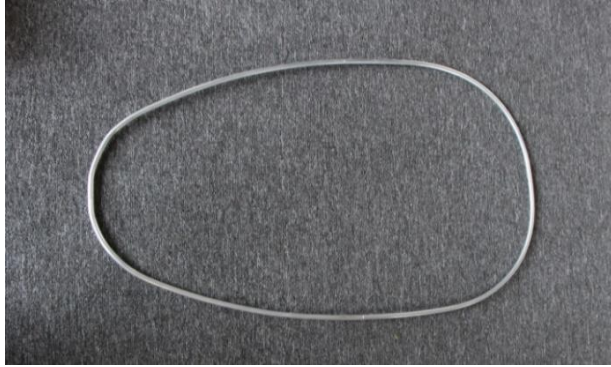
Take the four individual parts of the coaming and arrange them so that the **two long** curved parts and **the two shorter** curved parts are facing **each other** (see *illustration on the left*).



Then assemble the parts **without** inserting the upper fastener (see *image on the left*).



Then place the coaming on the floor and press the upper aluminum rods **slightly** downward (so that they are aligned in a straight line) and then connect them.



Please always follow these instructions; otherwise, the parts may become jammed, which could damage the aluminum sleeves.

Disassembly:

Please proceed in **exactly** the same way here: position the coaming, then **press down lightly** as shown in the previous image, **and always** carefully pull apart the topmost connection **first**.



Installation of the assembled coaming

Then place the coaming on the cockpit

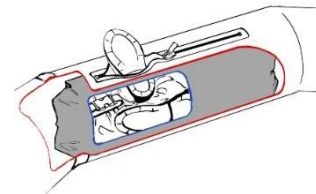


The cockpit is then placed over the aluminum coaming. This is a bit more difficult the first time but becomes easier with a little practice.



Once the aluminum coaming is fully in position, wrap the securing cord around the coaming. Disassembly is done in exactly the reverse order.

Special notes on the Nortik Packrafts from the Expedition series



Integrated pockets:

On both sides of the raft, inside the air tubes, there are integrated inner bags, each with a volume of **70 liters**.

These are used to stow luggage, improve the center of gravity, and reduce the wind resistance. They also serve as additional buoyancy aids.

Please note that these pockets must be filled BEFORE inflating the raft, and the zippers must be closed securely.

The bags should also be unloaded while the raft is deflated, as the counterpressure from the air tubes would otherwise cause the bags to bulge outward.

Special Notes on the nortik CityRaft

Seat:

The seat is already installed in the boat and is woven; the tightness of this weave can be adjusted to suit individual preferences.



Fin:

The CityRaft is equipped with a fixed fin; the further back you sit in the raft (on the seat),

the deeper the fin dips into the water, providing better straight-line stability. The further you shift your weight forward, the more the fin lifts out of the water, resulting in greater maneuverability.



Disassembly:

Unscrew the inflation valve to let the air out. Roll up the CityRaft from the back over the fin. Always roll it toward the valve so that the air is forced out. It's best to then place the inflation bag around the rolled-up CityRaft and slide it into the stuff sack.

Please make sure that the inflation valve (on models up to 2020) and the fin are not kinked!

Note:

You will notice that your PackRaft loses air pressure over time. This is also due to temperature fluctuations between night and day. It is not unusual to need to add a little air after 24 hours.

Accessories:

- Inflatable floor mat
- Ultralight spray skirt

If you have the optional inflatable floor mat, inflate it slightly, then lay it flat in the boat before installing the seat and inflate it fully. Try installing the inflatable mat before fully inflating the TrekRaft to see if it's easier for you.

You can install the ultralight spray skirt on the coaming

Disassembly:

Open the inflation valve to let the air out.

The PackRaft can either be folded (lay it flat, fold each side inward from the edge lengthwise, then fold them over each other—and finally fold it from one side to fit the size of the stuff sack) or rolled up. Always fold and roll toward the valve so that the air is squeezed out. When rolling it up, fold the sides inward first. It's best to wrap the inflation bag around the rolled-up/folded TrekRaft and then slide it into the stuff sack.

Please also ensure that your boat is not stored in a damp environment. If you ever have to pack it away while wet or damp, spread it out again promptly to dry.

General notes:

If the boat is exposed to sunlight, check the pressure in the air tubes from time to time. Air expands when heated. Therefore, prevent excessive pressure from building up in the tubes due to sunlight (heating) and release some air if necessary. Do not sit in the boat until it is completely in the water and no longer touching the bottom.

Safety

Always wear a life jacket when you are on the water with your boat. Be aware of sudden changes in weather. Do not underestimate the dangers of water sports.

Storage

You can store your boat in the carrying bag, either inflated or deflated. Please make sure that your boat is not exposed to high temperatures for longer than necessary.

Saltwater

If you ever use the boat in saltwater, rinse it thoroughly with fresh water afterward!

Notes on repairs and reinforcements for the PackRaft

A PU skin can be easily repaired in the event of an abrasion, small tear, or hole using PU adhesive and appropriate PU patches. To do this, cut a strip of the PU material. Make sure it extends generously beyond the damaged area.

Round off the corners of the strip with scissors or a similar tool.

Important: Put on the disposable gloves! Clean the strip and the area to be patched thoroughly with the **special cleaner** provided! Otherwise, the patch will not hold. Use the paper towel included in the repair kit for this. Wipe off any excess cleaner with clean water.

Then apply a thin layer of the included adhesive to both surfaces, extending slightly beyond the area to be repaired. **Let it dry for about 20 minutes!** Press the materials together and let the bond dry for a few hours. Aquasure dries in about 4–6 hours and fully cures in about 12–24 hours.

Acceleration: You can speed up the drying process and thus the readiness of your boat for use by mixing 1% water into the adhesive. This amounts to about 1–2 drops per tube. Mix the solution thoroughly and then use it as usual, observing the drying time mentioned above. This reduces the drying time to approximately 2–4 hours.

The adhesive is sensitive to moisture. Protect from light and heat. Store opened tubes in the freezer. Bring the adhesive to room temperature before use. Safety: Be sure to follow the safety instructions.

More info on the adhesive at: <http://mcnetteurope.com>

More information about the nortik PackRaft series at <http://www.faltboot.de>

We welcome your feedback, praise, and any other comments you may have about your PackRaft: kontakt@faltboot.de



You can also find more information about your product and other products, as well as where to buy them and downloads, at any time at:

FALTBOOT.DE