

**Installation Instructions for the Nortik Kayak Sail**

For most folding kayaks from the manufacturers *Nortik* and *Triton Advanced*



Dear Customer,

The installation of the sail system consists of two parts. First—if your boat does not have the necessary pre-installed hardware, or only has some of it—the instructions focus on installing the required “hardware” on the boat (mast mount, D-rings, rope fitting plate). In a second step, the installation of the sail itself is explained.

Both steps are straightforward and can be completed quickly with the help of these instructions. **Please take the time to read through the instructions carefully before getting started.**

**Important note:** These instructions are a recommendation! The sail can be installed in many different positions, etc. Therefore, please consider these instructions merely as a suggestion for installation on the boat types listed here.

If you have any questions, your dealer will certainly be happy to assist you. Otherwise, you are also welcome to contact us directly—as the manufacturer—(phone number +49 (0) 731 - 4007675; Email:kontakt@nortik.com ).

## 1) Scope of Delivery / Required Tools

The scope of delivery is divided into two parts: the installation kit and the sail itself.

### Folding Boat Installation Kit:



- a) Rope fitting plate
- b) Multifunctional bracket including a split pin for securing (see #1 in the sketch on the following page)
- c) 4x D-rings with a diameter of 10 cm (see #2, #3, and #4 in the sketch on the following page)
- d) 2x small D-rings for holding the sail in the folded position, incl. rubber cord and carabiner (install only if needed)
- e) PVC adhesive
- f) 2x cord tensioners (for tensioning the lines)
- g) 2x carabiners (for attaching the tension line to the D-rings)

**Nortik kayak sail:** Tension lines, 2-piece mast, sailcloth



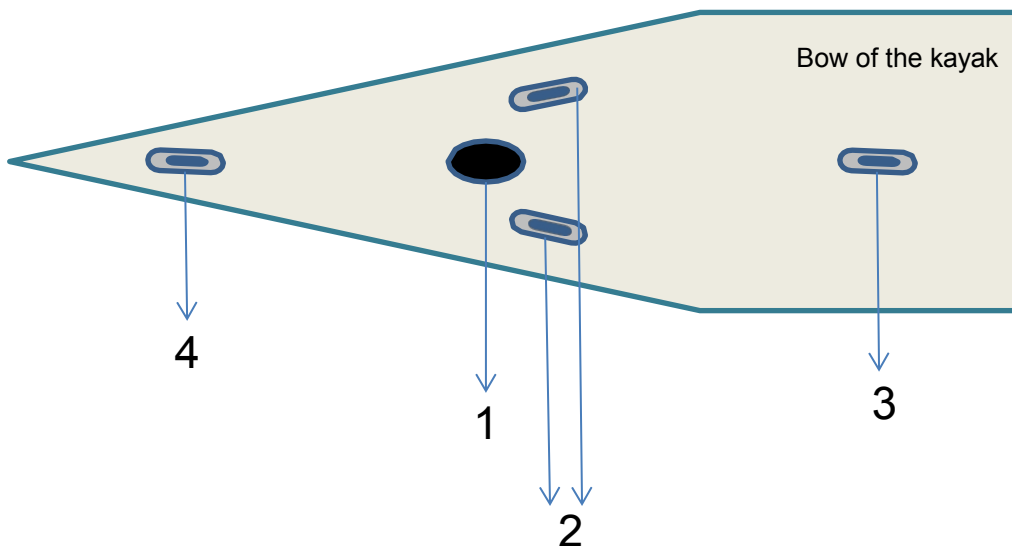
**Tools required:** Craftsman-grade heat gun (alternatively: household hair dryer), pencil

## 2) Installing the necessary components on the boat

These steps only need to be done once. Perform the installation on **the assembled boat!** The installed D-rings/mounts will then remain securely attached to the boat.

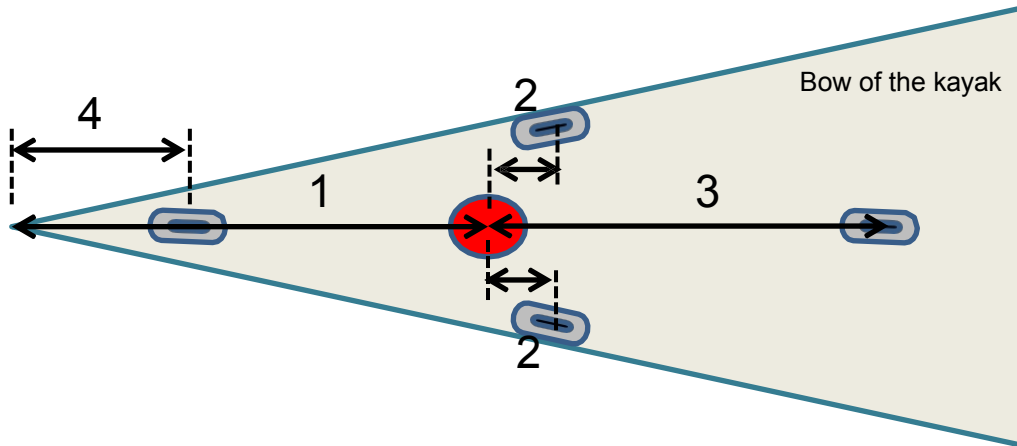
A heat gun is used to ensure the components are properly and permanently adhered. If you do not own one or cannot borrow one, they are available at any hardware store. The basic layout is outlined below, and the individual parts are explained:

**Bow view (sketch):**



- 1 Multifunctional mount.** This serves as a mast mount. There are also other accessories that you can optionally attach to it
- 2 2 x D-rings with 10 cm diameter patches**  
(the side guy lines will be attached to these later)
- 3 D-ring with a 10 cm diameter patch.** The ropes will later be threaded through here toward the cockpit
- 4 D-ring with patch, 10 cm in diameter.** If your boat does not already have a D-ring at the bow, this one will be installed. A rope will also run through this. If your boat already has a D-ring (e.g., on the carrying handle), you do not need this one.

The position where the D-rings and the bracket are to be mounted varies depending on the boat model. These positions are explained below for each boat model. This allows you to find the correct measurements for your boat. The installation is then demonstrated below using the **Ladoga 2 Advanced** as an example.



**Explanations:**

- 1 Shows the distance from the bow tip to the center of the multifunction mount
- 2 Shows the distance from the center of the multifunction bracket to the center of the D-rings mounted on both sides
- 3 Shows the distance from the center of the multifunction mount to the center of the rear D-ring
- 4 Shows the distance from the bow tip to the center of the front D-ring (if one needs to be installed)

The measurements are "approximate" values. They do not need to be exact to the millimeter, but they should provide a rough guide. Below you can see the recommended distances for each boat type!

**Distances by boat type**

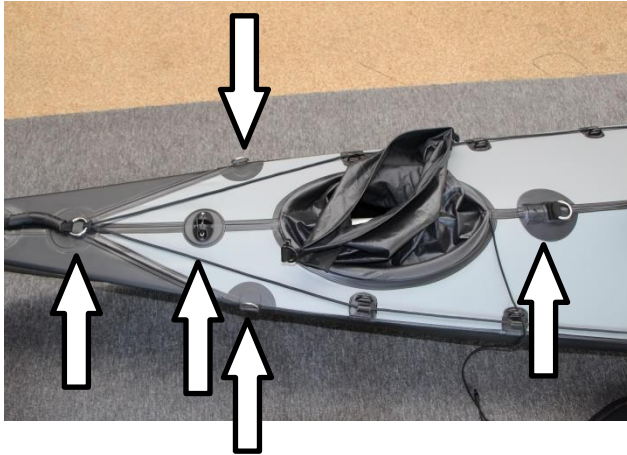
**Triton Ladoga 1 Advanced:** 1:  
75 cm  
2: 8 cm  
3: 60 cm  
4: 60 cm

**Triton Ladoga 2 Advanced:**  
1:75 cm  
2: 8 cm  
3: 70 cm  
4: 50 cm

**Triton Vuoksa 2 and 3 Advanced:**  
1:46 cm  
2: 6 cm  
3: 47 cm  
4: 14 cm

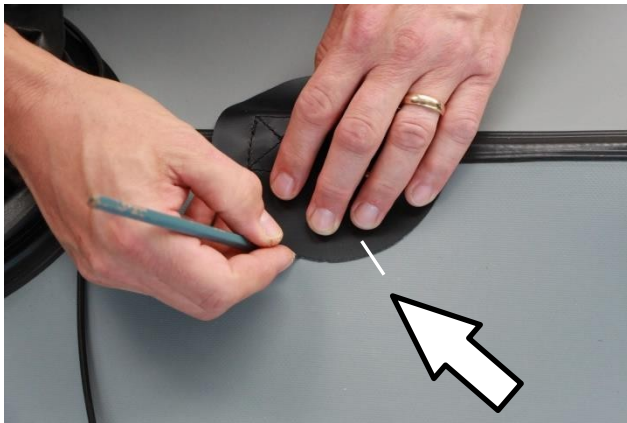
**Nortik Argo 1 | Nortik Argo 2**  
1: 70 cm | 64 cm  
2: 6–8 cm | 6–8 cm  
3: 70 cm | 90 cm  
4: 30 cm | 40 cm

## Installation of components using the *Ladoga 2 Advanced* as an example



On the left, you can see the components that have been attached. If your boat does not have a D-ring installed on the handle at the front of the bow, one would also be attached there. Otherwise, you can use the image to get an overview of the position and orientation of the individual components.

The parts are then always attached according to the same principle, which will now be explained.



First, measure the positions of the components to be installed. Refer to the overview at the front, depending on your boat type.

Next, position the component exactly where you want it to sit and trace around it with a pencil. It's best to also draw a thin line with the pencil from the component to your skin so you'll know exactly how it was positioned later (indicated on the left by a white line).



Clean the underside of the D-ring/multifunction mount with, for example, acetone or cleaning solvent, and then coat the entire surface with PVC adhesive. Use a piece of cardboard or similar material as a work surface.



Then apply a thin, even layer of PVC adhesive to the boat hull in the area cleaned with acetone or cleaning solvent. Proceed carefully and stick to your markings.

Let the adhesive dry until it no longer strings (approx. 15–25 min).



Once dry, place the D-ring on the spot on the boat that has also been coated with PVC adhesive. Since both are dry, you can now align the position very well. The thin pencil line you made earlier will help you here.

Position the D-ring accordingly and grab the heat gun. You'll get the best results using the setting that blows only a gentle stream of air. Set the temperature to 230°C and carefully heat the D-ring from a distance of 20–30 cm using circular motions!

If you don't have a heat gun on hand, you can also use a household hair dryer on the highest setting. However, this method doesn't allow for precise work, and you can't regulate the heat. Depending on the hair dryer's power, you may need to hold it closer to the skin or D-ring.

The heat immediately activates the adhesive, creating a very strong bond. Keep pressing the D-ring against the boat's hull as shown in the picture above (Caution: Do not hold the hair dryer against your fingers or hand!).

Proceed carefully when heating and make sure that no single spot is heated for too long or at too hot.



The basic procedure is the same for all components to be bonded. Please also note the following instructions:



The two side D-rings are glued, so to speak, over the edge of the upper and lower hull. The D-ring must be positioned so that the ring itself remains above the lower hull. (see images on the left)

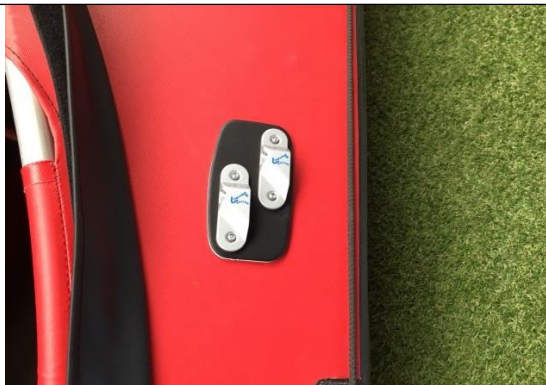
**Rope fitting plate:**



The two guy lines will later be attached to this plate. The lines are used both for setting up the sail and for general steering. They are your most important tools when sailing with the **Nortik Kayak Sail**.



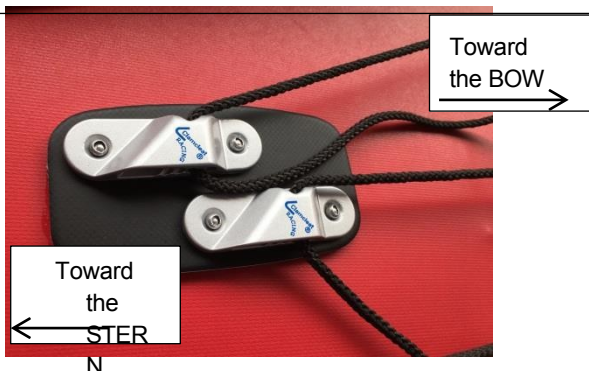
Attach the rope fitting plate near the cockpit so that you can access it from the seat (from the front seat in multi-seater models). You must be able to reach the plate to operate the sail. Furthermore, the plate must **not be placed in a location where the skin will later be folded** !



Find a position that is comfortable for you and allows you to apply the plate easily. (Shown on the left in the example: **Ladoga 2 Advanced**)



**Important:**  
The plate must be attached so that the rope can later be released during operation by pulling it firmly backward. In other words: The rope is secured by clamping it toward the bow! The “teeth” of the clamp point toward the bow, as shown on the left.



Please then install all other necessary components as shown in the overview and dimensions provided at the beginning. It is best to let the adhesive bonds cure for 24 hours.

**The Sail**



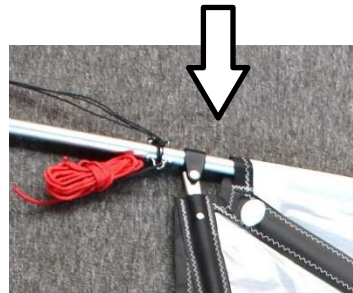
Your sail consists of the sailcloth itself, the two-piece mast, and the guy lines.



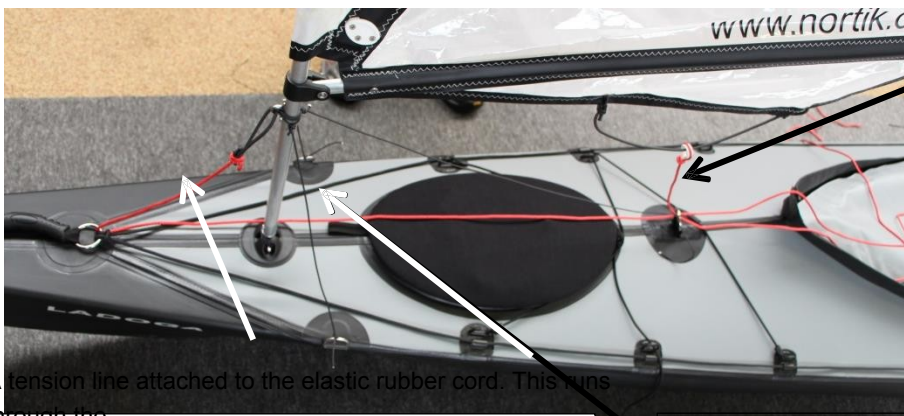
Please spread out the sailcloth and assemble the mast. The end of the thinner mast section with the plug at the tip should point upward.



Then slide the mast through the plastic clamp and into the hem of the sailcloth



The basic setup will look like this:



The sheet, which is attached to the sail and runs all the way to the cockpit. You use this sheet **to control** the sail.

A tension line attached to the elastic rubber cord. This runs through the front D-ring and then to the cockpit. This allows the sail to be controlled from the cockpit **pulled up**.

side tension lines, which each lead to the rear. to the D-rings attached to the sides (The arrow shows only the right one)

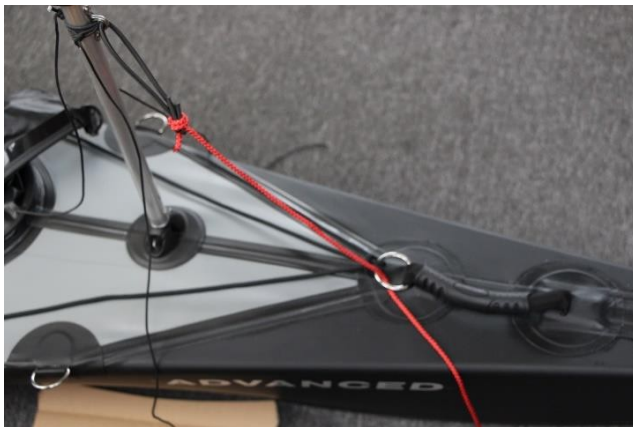
**Set up the sail in the following order:**



Insert the mast into the multifunctional mount so that the **guide eyelet** riveted onto the mast points **toward the stern**, and secure the mast with the split pin.



Make sure the **safety rubber strap** passes over **the front**.



Then thread the tension line, which is attached to the flexible rubber band, through the front D-ring. Next, thread this line through the rear D-ring and continue toward the cockpit to the rope fitting plate.

**Now tension the sail:**



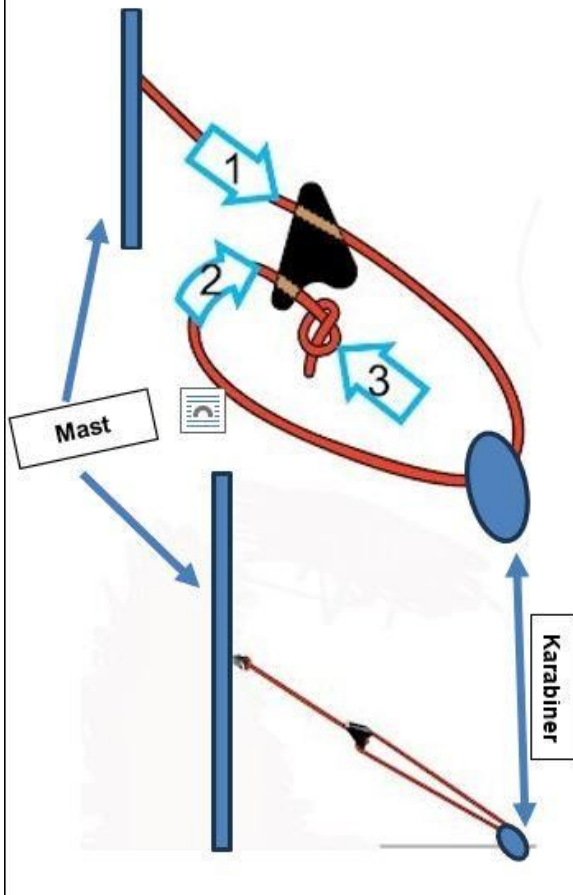
First, attach the two included carabiners to the two D-rings on the sides

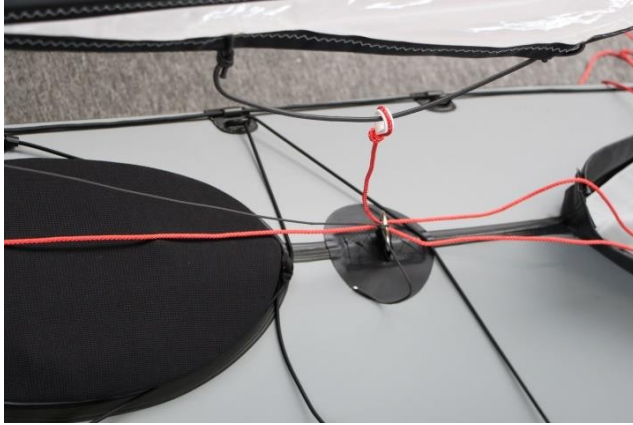
**Instructions for cord tensioners:**

The diagram on the left explains in three steps how to attach the two included line tensioners to the guy lines.

Once the line tensioners are attached to the guy lines, you can tighten the sail by pulling each line tensioner toward the mast. The result is shown in the image below (scubi XL).

To release the guy lines, pull each line tensioner toward the carabiner. By removing the guy lines from the carabiners, you can easily take your sail off the boat once your paddling trip is over.



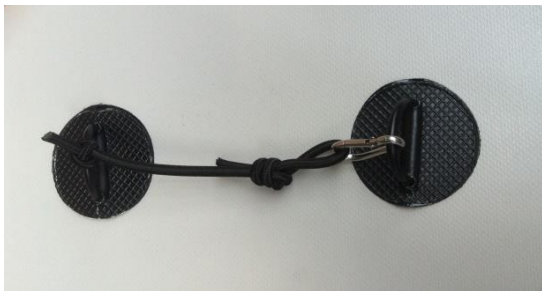


Then guide the long guy line, which runs through the front D-ring, toward the cockpit and through the rear D-ring (the one closest to the cockpit).



You need both lines to operate the sail, and they are secured to the cleats on the rope fitting plate by threading them through and clamping them in place at the front.

### Sail in stowed position



When the sail is not in use, it lies on the deck. Either your boat has deck lines in that area so you can clip the sail underneath them, or you can attach the two small round D-rings included. You can shorten the rubber cord as needed.



The D-rings are attached in the same way as all other components. Please make sure that there is not too much tension on the plastic rings. These are intended only for securing, not for "lashing." Of course, additional D-rings (plastic, stainless steel) are also available if needed. Ask your dealer about them.

**General and safety-related instructions:**

Always wear a life jacket when you are out on the water in your kayak! Be on the lookout for sudden changes in weather.

The use of sails is recommended only for experienced paddlers and sailors. Do not underestimate the forces that act on your boat in windy conditions and affect its handling. If necessary, seek instruction or training from experienced sailors, approach the subject cautiously, and practice in safe, supervised, and secure areas.

A sailing license is not required per se, but be sure to check before using the sail whether this is permitted without restrictions at your planned location or if there are regional restrictions!

For more information about this and other products, as well as where to buy them and downloads can also be found at any time at:

**FALTBOOT.DE**

